

# What is planned? Part Two: The Stonehenge Tunnel

Continuing our slide presentation “WHAT IS PLANNED”, Part Two is a summary description of the construction of the tunnel, spoil and what happens to the spoil based on information presented to the Examination. Scroll through the slides below.



Scroll through slides using the arrows at the side of the image above.

Video of slide show available below

Missed Part One? Catch up here: [Part One The Components](#)

## Credits, references and sources

Image credits: Images have been based on material published by

Highways England unless stated otherwise. Some labels have been added for clarification.

- [Environmental Statement Chapter 2: The scheme](#) – Highways England, October 2018
- [Environmental Statement Chapter 2: Figure 2.7 Construction layout](#) – Highways England, October 2018
- [Examining Authority's Report of Findings and Conclusions and Recommendation to the Secretary of State for Transport](#) – Planning Inspectorate, 2 January 2020
- [HS2 Launches its first TBM as tunnelling begins in the Chilterns](#) – New Civil Engineer, 13 May 2021
- [Work begins boring first HS2 tunnel under Chiltern Hills](#) – The Guardian, 13 May 2021
- [HS2 high-speed rail project begins underground tunnel](#) – BBC News, 13 May 2021
- [APP-040 6.2 Environmental statement Ch 2 – The proposed scheme. paras: 2.3.17-2.3.18, 2.4.8 , 2.4.1 – 2.4.3, 2.4.12 – 2.4.14, 2.4.17 – 2.4.20, and 2.4.52 to 2.4.56,](#) – Highways England, October 2018
- [APP-285 6.3 Environmental statement Appendices. Appendix 12.1 – Tunnel arisings management strategy para.1.1.3 and para.3.3.12- 3.3.14](#) – Highways England, 2018
- [Ibid – Appendix A, Traffic movements](#) – Highways England, 2018
- [Ibid – Appendix 12.1 – Tunnel arisings management strategy Table 3.3 and para.3.3.2](#) – Highways England, 2018
- [History of Silbury Hill](#) – English Heritage, accessed May 2021
- [Research News – Winter 2008-09, p5](#) – Historic England (formerly English Heritage)
- [APP-046 6.1 Environmental statement Chapter 8 – Biodiversity, 8.9.54 to 8.9.57](#)– Highways England, 2018
- [REP7-011 A303 Amesbury to Berwick Down 8 Deadline 7 8.6\(1\)](#) – Statement of Common Ground p.8, Table 3.1,

[Issue ref. 3.6](#) – Natural England, 2019

- [APP-046 6l1 Environmental statement CH 8 – Biodiversity 8.8.14-21](#) – Highways England, 2018
  - [REP2a-005 Council for British Archaeology, Deadline 2a Submission – Supplementary observations arising from material deposited for Deadlines 1 & 2 Part A – Archaeological survey reports and draft mitigation strategy, pp. 13-14](#) – Council for British Archaeology, 2019
- 

The Stonehenge Alliance has campaigned against the A303 Stonehenge Expressway for many years and supports the Save Stonehenge WHS legal challenge to the road scheme. Please note: the Stonehenge Alliance has no connection with any other protest groups involved in direct action against A303 Stonehenge. [More about us.](#)

---

## **What is planned? Part One – Scheme components**

View in full screen.

“WHAT IS PLANNED” Part One is the first of a series of summaries about the components of the Stonehenge A303 road widening scheme presented here as a [video](#). You can also scroll through the slides below.



**Scroll through slides using the arrows at the side of the image above.**

## **Credits, references and sources**

Image credits: Images have been based on material published by Highways England unless stated otherwise. Some labels have been added for clarification.

- [Environmental statement Chapter 2: The scheme](#) Highways England, October 2018
- [Examining Authority's Report of Findings and Conclusions and Recommendation to the Secretary of State for Transport](#) Planning Inspectorate, 2 January 2020
- [About the scheme](#) Highways England (Accessed May 2021)
- [A303 Amesbury to Berwick Down: Improving journeys, reuniting the Stonehenge landscape](#) Booklet, Highways England, March 2019
- [Strategic Road Network: Initial Report](#) Highways England, December 2017

---

The Stonehenge Alliance has campaigned against the A303 Stonehenge Expressway for many years and supports the Save Stonehenge WHS legal challenge to the road scheme. Please note: the Stonehenge Alliance has no connection with any other protest groups involved in direct action against A303 Stonehenge. [More about us.](#)

---

## Success at the first hurdle, but more hurdles ahead

*“There can be no more iconic symbol of the global heritage of mankind than Stonehenge. We have a duty to safeguard it for future generations.” Dr Kate Fielden, Hon Secretary to the Stonehenge Alliance*

### **We have not one but three days in court**

We learned last week that the challenge by Save Stonehenge World Heritage Site Ltd (SSWHS) to Transport Secretary Grant Shapps' outrageous decision to go ahead with the A303 Stonehenge scheme will be heard in the High Court from **Wednesday, 23 to Friday, 25 June**. Thanks to all of you whose generous donations helped SSWHS take on the Government.

This is our best chance to stop the Stonehenge tunnel and road scheme. The Department for Transport will defend the challenge, with Highways England and Historic England as interested parties.

## **SSWHS is contesting the decision on the following grounds:**

- *Harm to each heritage asset within the project should have been weighed in the balance, instead of considering the “historic environment” as a whole.*
- *None of the advice provided by Historic England provided the evidential basis for the Secretary of State’s conclusion of “less than substantial harm” to any of the assets impacted by the project.*
- *He allowed purported “heritage benefits” to be weighed against heritage harm, before deciding whether that overall harm was “substantial” or “less than substantial”, which was unlawful under the National Policy Statement*
- *He failed to take into account that development consent would breach the World Heritage Convention*
- *He left out of account mandatory material considerations: the breach of various local policies; the impact of his finding of heritage harm which undermined the business case for the proposal and the existence of at least one alternative*

## **Thanks for your fantastic support**

Thanks to your generosity we reached the initial target of £50,000 extraordinarily rapidly. This enabled the legal team to go forward with the preparatory work necessary for the judicial review in time to meet the deadline of 24 December last year. None of us could have got this far without you.

It is no surprise, however, that a landmark, complex case such as this is going to be more expensive than at first anticipated. From the outset we knew that the legal opportunity afforded by the planning process might be an expensive journey.

## Legal action is expensive

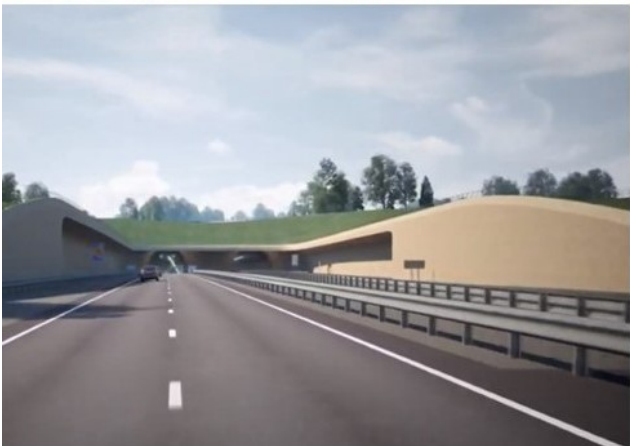
Although the legal team is already working at a heavily discounted rate the three-day hearing requires considerable extra work, so SSWHS has been asked by [CrowdJustice](#) to raise the funding target to **£80,000**.

With your help SSWHS has successfully negotiated the first hurdle. Now we need to prepare for the next hurdle: the three days in court. **We urge our supporters to [help SSWHS](#) to continue to fight this appalling scheme.**

Stonehenge Alliance is firmly committed to do its utmost to support this fight. We hope you will continue to support the Judicial Review too and donate if you can.



*“The scheme’s benefits “would not outweigh the harm arising from the excavation of a deep, wide cutting and other engineering works, within the WHS and its setting, of a scale unseen in this unique ‘landscape without parallel’.”* *Examining Authority for the Planning Inspectorate that advised the Transport Secretary against approval of the scheme.*



TOP L: Western tunnel portal with pedestrians on old A303 as a byway (image: Highways England). TOP R: New Longbarrow interchange (image: Highways England). BOTTOM L: Eastern tunnel portal below ancient Stonehenge Avenue (image: Highways England). BOTTOM R: Planned flyover beside Listed Amesbury Abbey and Blick Mead Mesolithic site (image: private photomontage).



Diagrammatic map showing the proposed scheme. Not shown in Highways England's plan above are the scheduled monuments in the World Heritage Site which are shown in our map [here](#).

## Media links

[CrowdJustice update – Our date in the high court](#)

[Salisbury Journal – High Court date set for Stonehenge tunnel decision](#)

[Planet Radio – High court date set for A303 Tunnel hearing](#)

[BBC News online – Stonehenge A303 tunnel: Date set for judicial review](#)

[Leigh Day Solicitors – Judicial review hearing into Stonehenge road project ordered](#)

[Construction News – Stonehenge tunnel decision to be challenged in court](#)

---

The Stonehenge Alliance has campaigned against the A303 Stonehenge Expressway for many years and supports the Save Stonehenge WHS legal challenge to the road scheme. Please note: the Stonehenge Alliance has no connection with any other protest groups involved in direct action against A303 Stonehenge. [More about us.](#)

---

## **George McDonic (1927 – 2021), Chairman of Stonehenge Alliance**



George McDonic outside  
Department of Culture  
Media and Sport,

Whitehall, 2016

George McDonic, MBE, BL, DIPLTP, FRTPI, DPA, FFB, our distinguished fellow-campaigner and Chairman of the Stonehenge Alliance since 2006, died on 14 February 2021.

George McDonic, a qualified barrister and Chartered Town Planner, retired from the post of County Planning Officer and Director of Environmental Services in Wiltshire in 1987 and was a Past President of the RTPI in 1986/87. He took part in Department of the Environment and English Heritage working groups on the future of Stonehenge in the 1970s and 1980s and never lost his concern for the well-being of this special place. He was chairman of CPRE Wiltshire for many years and was awarded the MBE in 2004 for his services to conservation.

A founding representative of the Stonehenge Alliance, George's knowledge and experience were of enormous benefit to our campaign to protect the World Heritage Site from major developments that would impact adversely on its landscape and archaeology.

Born in 1927, he saw the development of conservation principles in planning over his lifetime and, although saddened to see a decline in those safeguards in recent years, continued to champion them, undaunted by neglectful authority. We have lost a wise and greatly respected friend.

---

The Stonehenge Alliance has campaigned against the A303 Stonehenge Expressway for many years and supports the Save Stonehenge WHS legal challenge to the road scheme. Please note: the Stonehenge Alliance has no connection with any other protest groups involved in direct action against A303 Stonehenge. [More about us.](#)

---

# Thank you! Our target has been reached



W  
e  
a  
r  
e  
o  
v  
e  
r  
w  
h  
e  
l  
m  
e  
d

by the generosity of over 2,000 donors who have met our stretch target of £50,000 within a month! Thank you all so much for your wonderful support which means that we now have funding to go forward to the next stage. [BBC online news](#) reported this fantastic achievement on 31 December.

Donors' support allowed our application to be made on 23 December for a judicial review of Transport Secretary Grant Shapps' decision to proceed with the A303 Stonehenge tunnel scheme. Our lawyers issued a [press release](#) on the same day which sets out the key grounds of our challenge. We expect to hear from a judge later in January whether we have a case.

Legal action is both expensive and unpredictable. Even if we

have a case it could eventually lead to an appeal which would involve greater costs than so far anticipated. **Any funds raised over the £50,000 we need for the judicial review stage will be prioritised to pay any further costs that might be incurred on our case.**

So we continue to welcome donations to the appeal and sincerely hope that the strength of concern shown for protection of the Stonehenge World Heritage Site brings a positive outcome for this internationally valued heritage landscape in 2021.

We send all good wishes to our supporters for the New Year and will continue to post updates on the case when we have news.

For case updates and to add to securing future appeal funds please go to:

□

[www.crowdjustice.com/case/save-stonehenge-world-heritage-site](http://www.crowdjustice.com/case/save-stonehenge-world-heritage-site)

---

The Stonehenge Alliance has campaigned against the A303 Stonehenge Expressway for many years and supports the Save Stonehenge WHS legal challenge to the road scheme. Please note: the Stonehenge Alliance has no connection with any other protest groups involved in direct action against A303 Stonehenge. [More about us.](#)