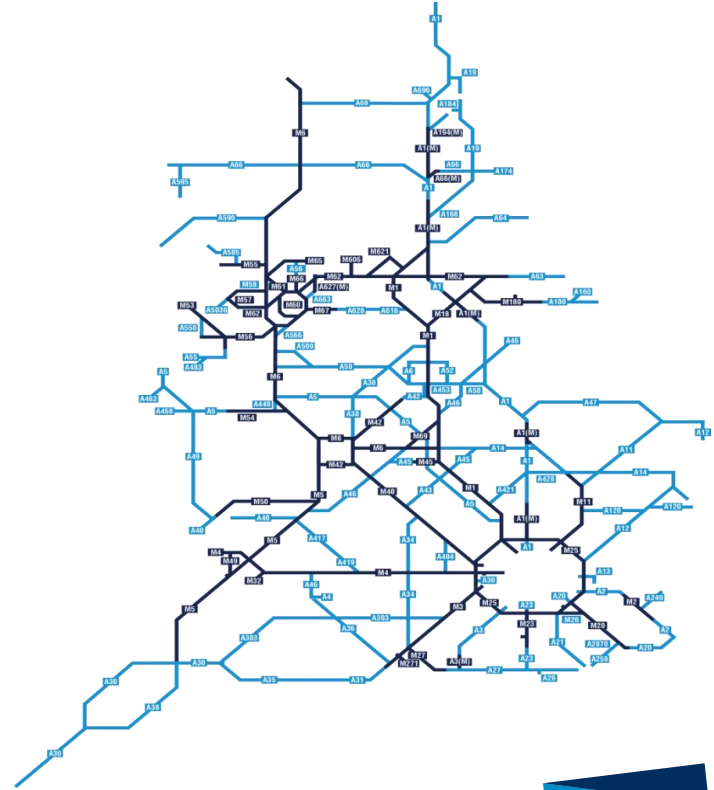


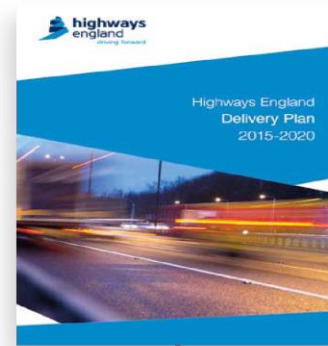
Creating an expressway to the South West

Today's agenda

- Welcome
- Operating the route
- Maintaining the route
- Modernising the route
- Your thoughts and questions



Welcome to Highways England



Improving Service

Planning for the future

Build our capability

Building relationships that deliver

Enabling economic growth

More free flowing network

Safer network for all

Improved environment

More accessible network

Improving customer offer

Efficient delivery

Effective delivery

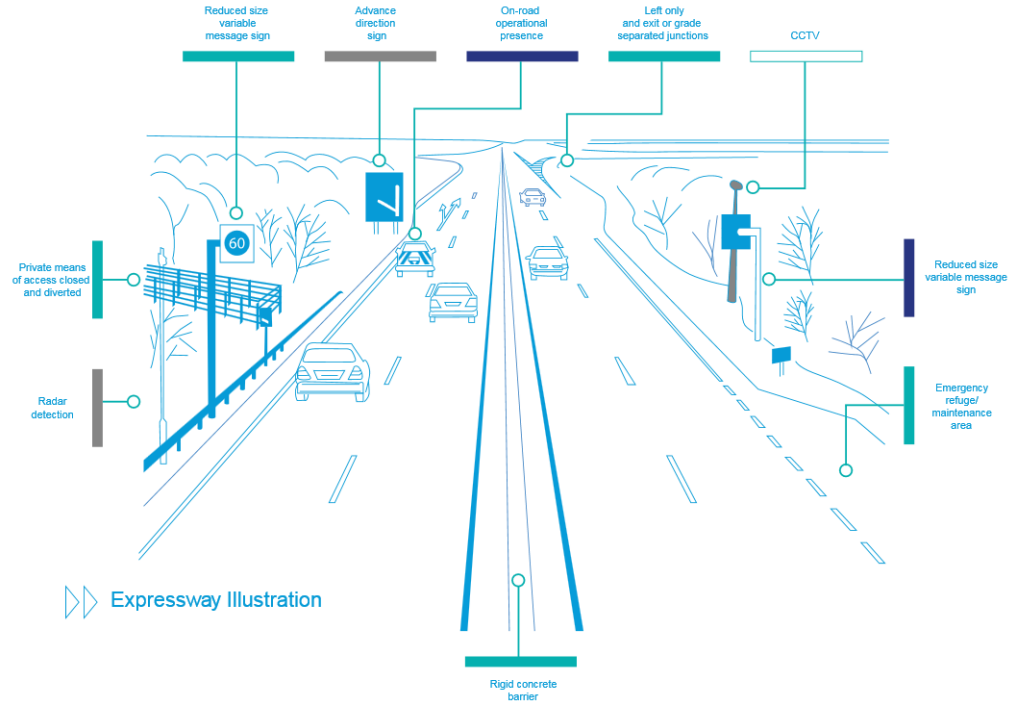
Highways England in the South West



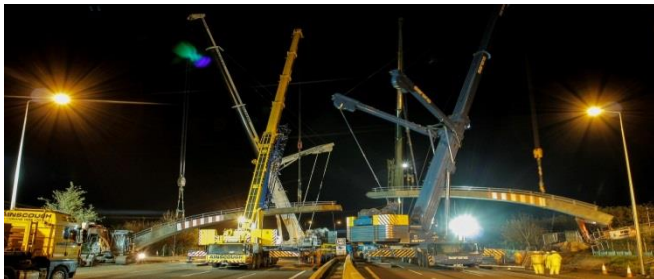
The A303/A358 Route



What is an expressway?



How do we get there?



Modernise



Maintain



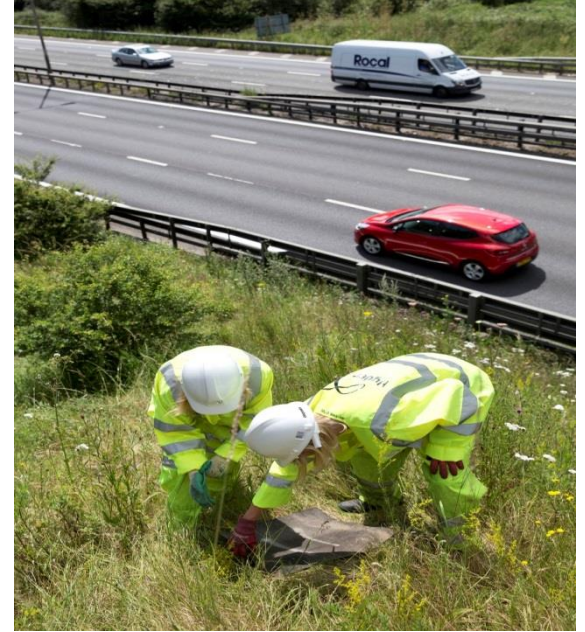
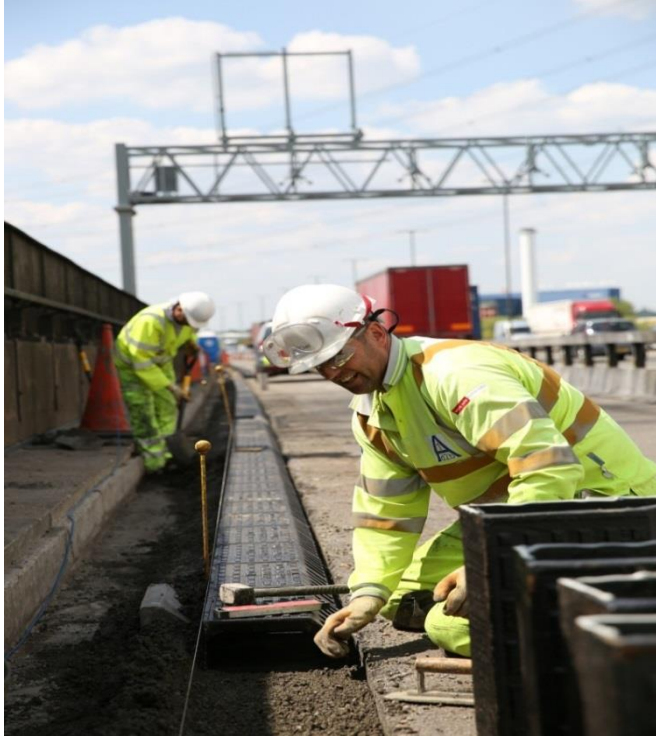
Operate

Highways
England
Service

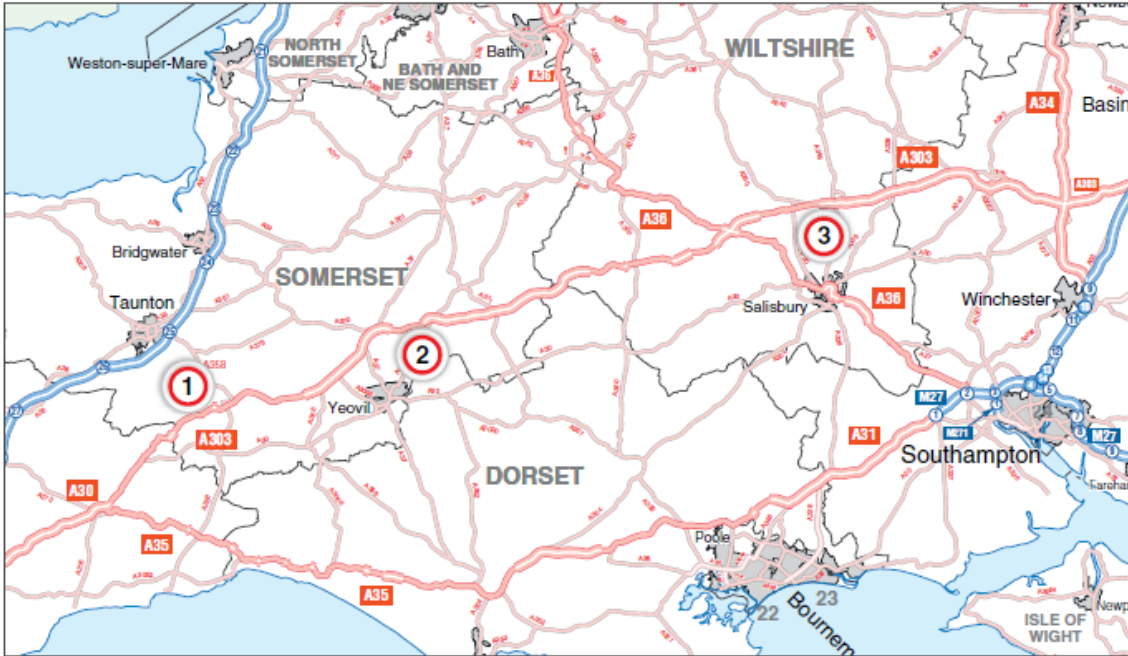
Operating the route



Maintaining the route



Modernising the route



© Crown copyright and database rights 2015 Ordnance Survey 100030649

1 – A358 Taunton to Southfields

2 – A303 Sparkford to Ilchester

3 – A303 Amesbury to Berwick Down

A303 Amesbury to Berwick Down



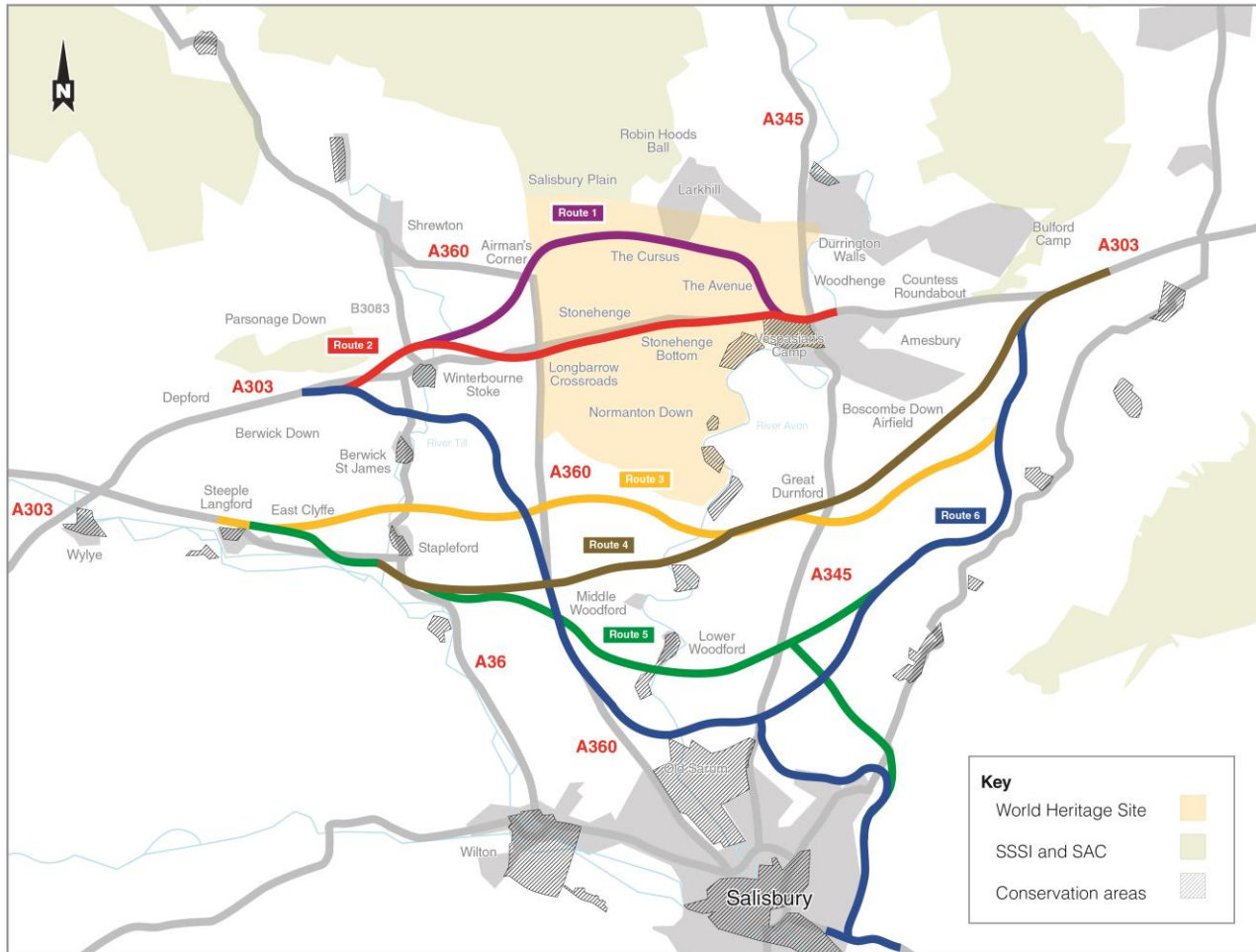
© National Trust Images / John Miller (used with permission)



History of the scheme

1989	Enters roads programme
1991 - 1993	Initial route identification
1993	Public consultation
1994 - 1995	Further route identification
1995	Planning conference
1996	Scheme withdrawn from roads programme
1998	Scheme re-introduced to roads programme (exceptional environmental scheme, 2.0km cut and cover tunnel)
1999	Preferred route announced
2002	2.1km bored tunnel announced
2004	Public inquiry
2005	Review of options after substantial increase in estimated costs
2007	Withdrawn from roads programme
2013	A303 feasibility study announced as part of the Autumn Statement
2014	Scheme included in the Road Investment Strategy (2015-2020)

Route corridors examined at public inquiry (2004)



Principal objectives

The principal objectives of the scheme are:

Culture and heritage:

to contribute to the conservation and enhancement of the World Heritage Site by improving access both within and to the site.



Environment and community:

to contribute to the enhancement of the historic landscape within the World Heritage Site, to improve biodiversity along the route and to provide a positive legacy to communities adjoining the road.



Transport:

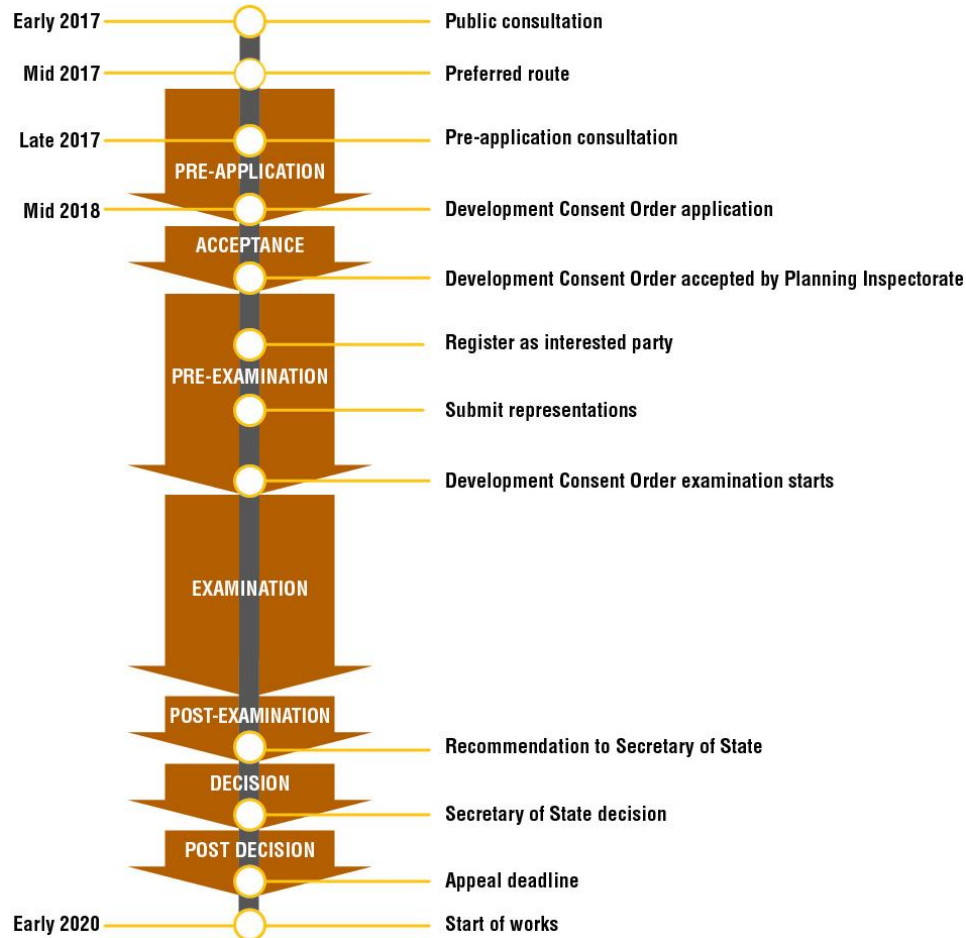
to create a high quality route that resolves current and predicted traffic problems and contributes towards the creation of an expressway between the M3 motorway and Exeter.

Economic growth:

in combination with other schemes on the route, to enable growth in jobs and housing by providing a free flowing and reliable connection between the East and the South West peninsula.



Development Consent Order Process



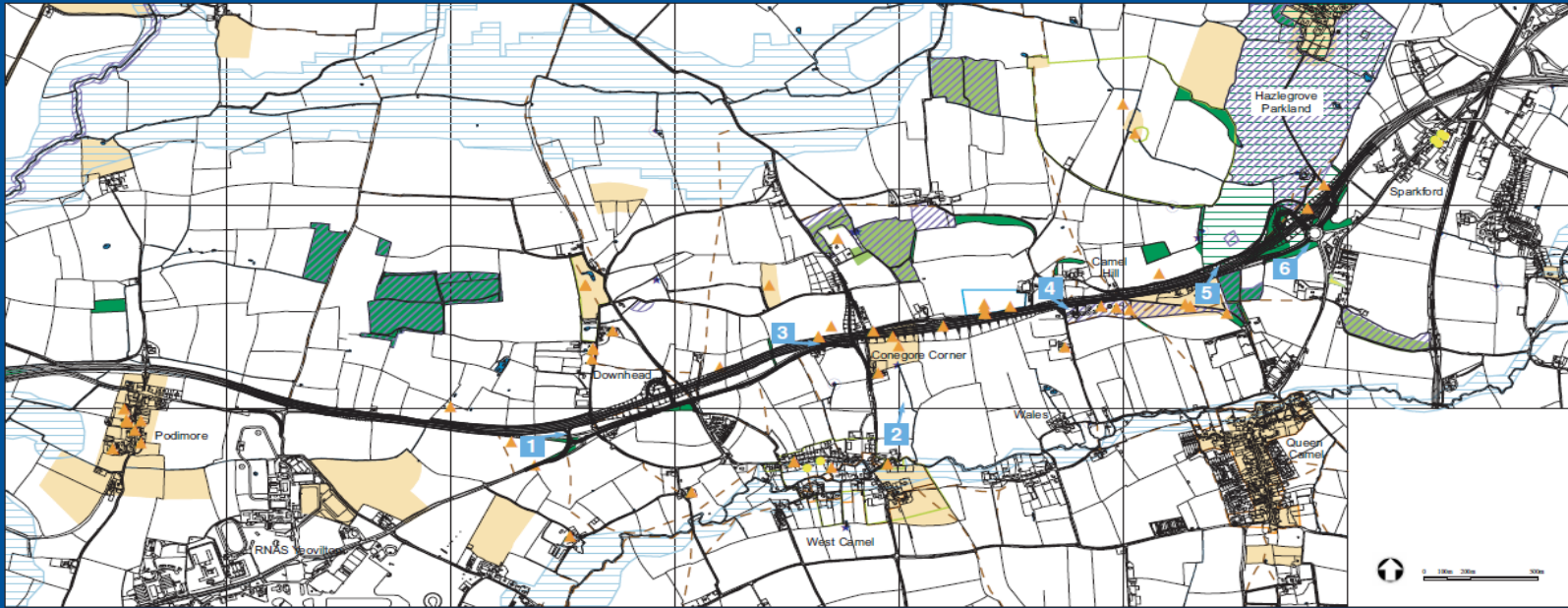
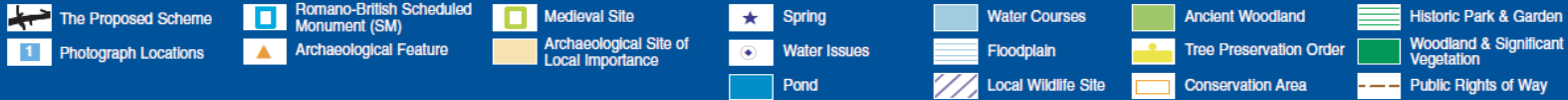
A303 Sparkford to Ilchester



History of the scheme

1991	Public consultation and Preferred Route announced
1994	Public Inquiry
1995	Secretary of State accepted findings
2003	Further review of options
2003	Public Consultation
2013	Feasibility Study
2014	Roads Investment Strategy

Option considered at consultation (2003)



Principal objectives

The principal objectives of the scheme are to:



Support economic growth

Reduce severance of
local communities



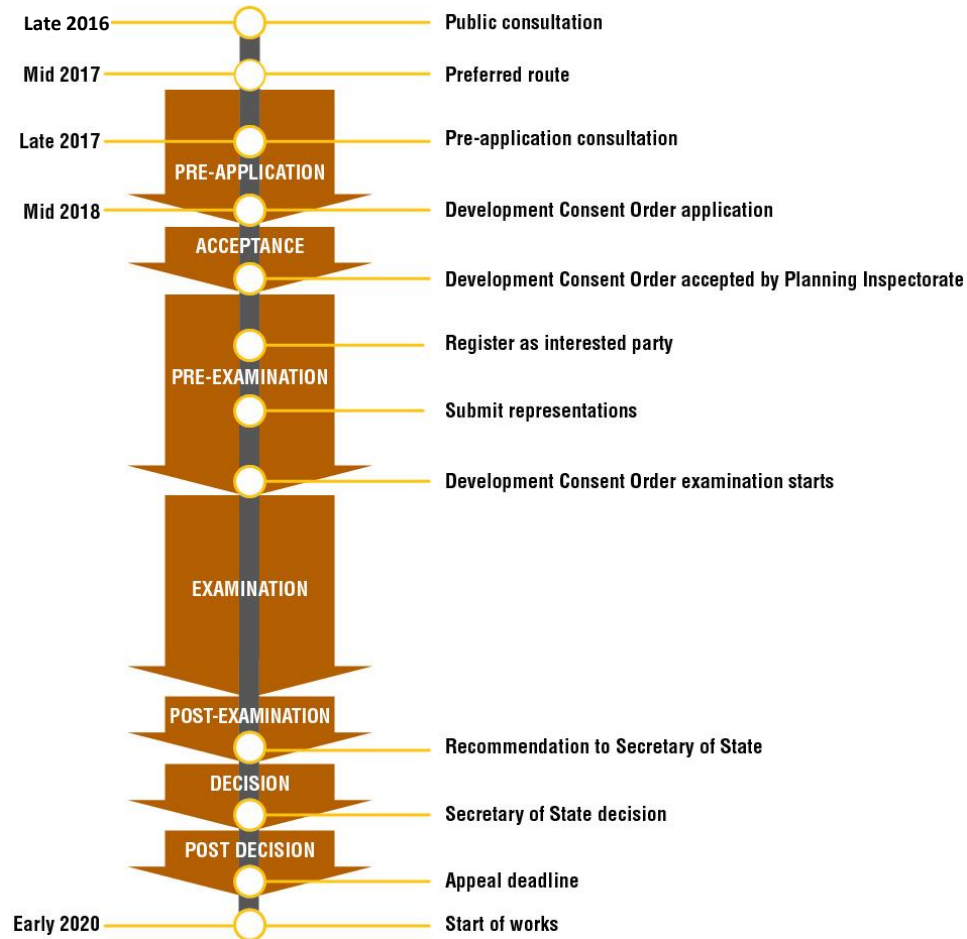
Improve the connectivity of the
South West to the rest of the UK

Improve the resilience and safety of
the route

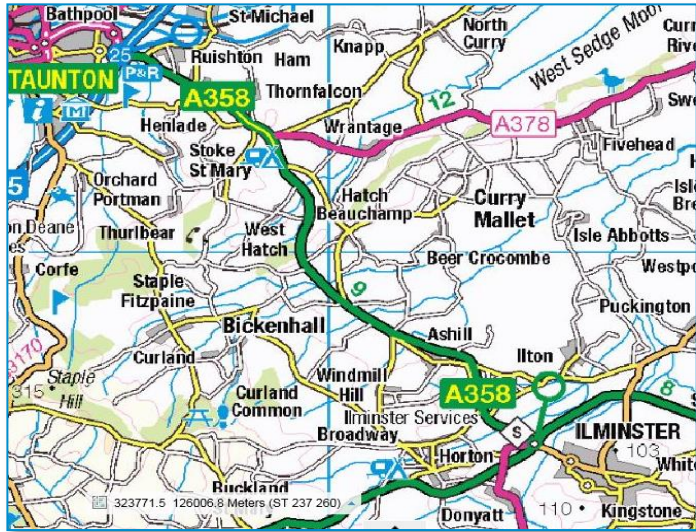


Avoid unacceptable impacts on
the surrounding natural
environment and landscape

Development Consent Order Process



A358 Taunton to Southfields

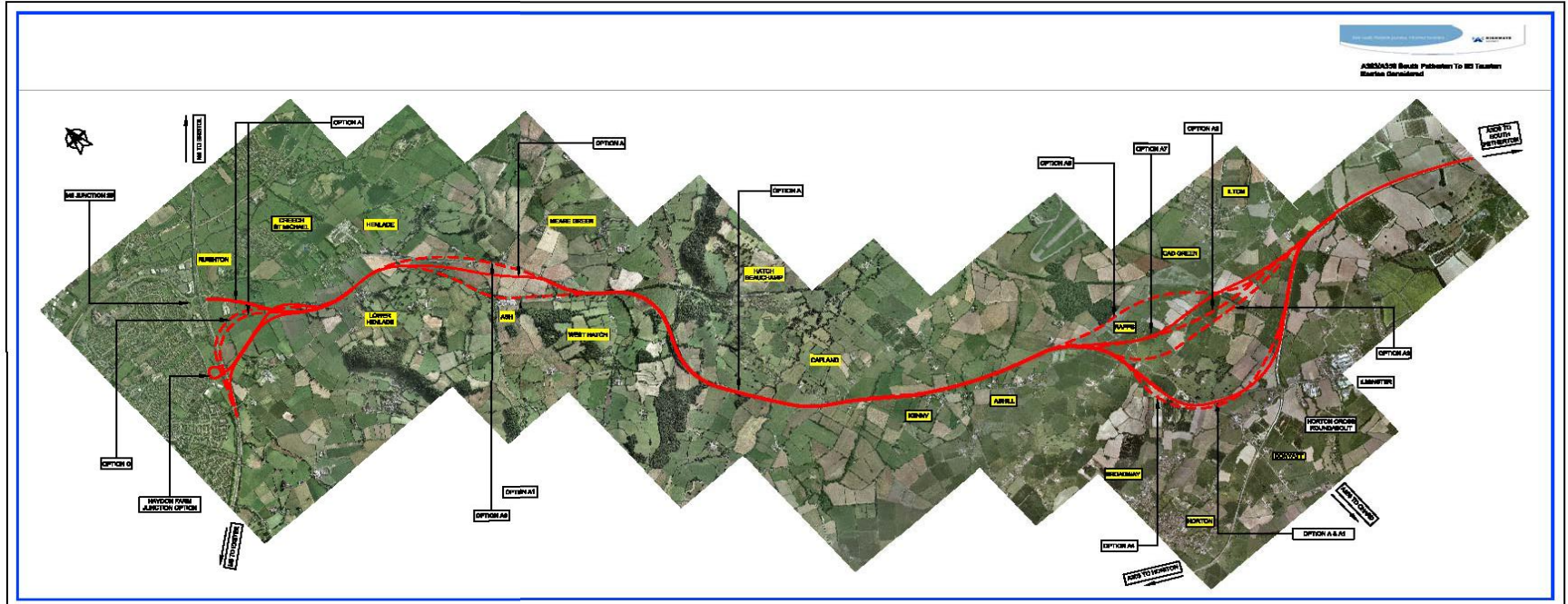


- Investing in a dual carriageway link between the M5 and the A303
- Reducing congestion and supporting economic growth

History of the scheme

2007	Public consultation
	Scheme not progressed
2013	Feasibility Study
2014	Roads Investment Strategy

Route corridors considered at consultation (2007)



Principal objectives

The principal objectives of the scheme are to:



Support economic growth

Reduce severance of
local communities



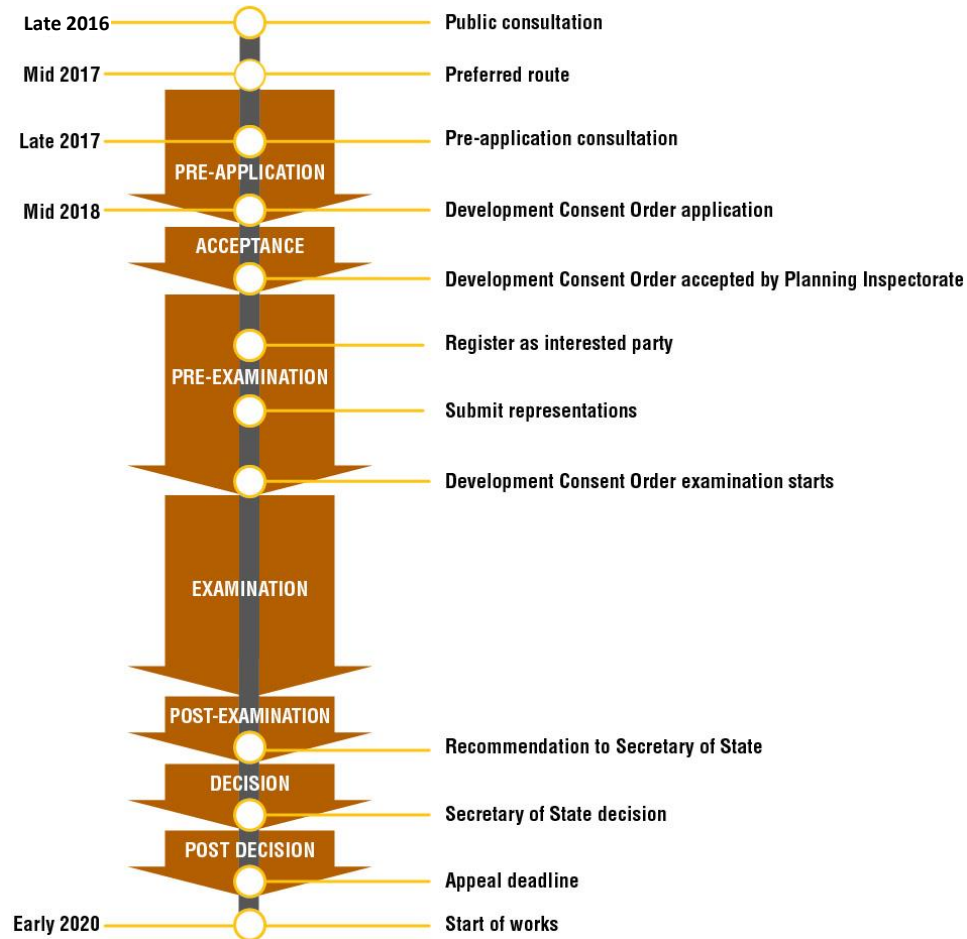
Avoid unacceptable impacts on
the surrounding natural
environment and landscape



Improve the connectivity of the
South West to the rest of the UK

Improve the resilience and safety of
the route

Development Consent Order Process



Thank you

Your feedback and questions